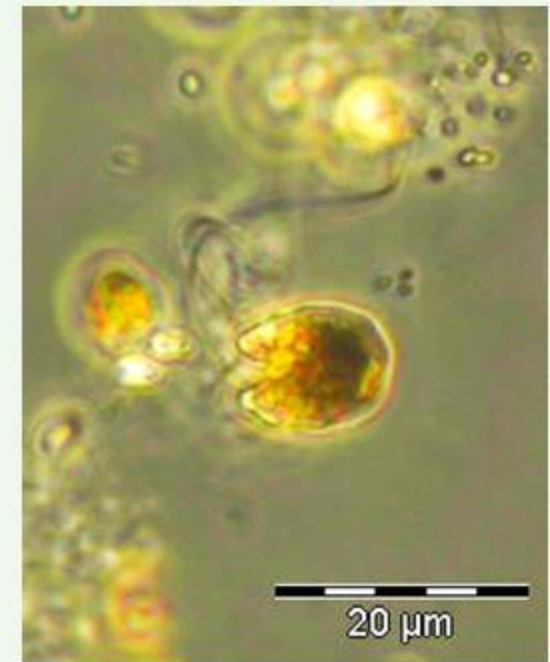
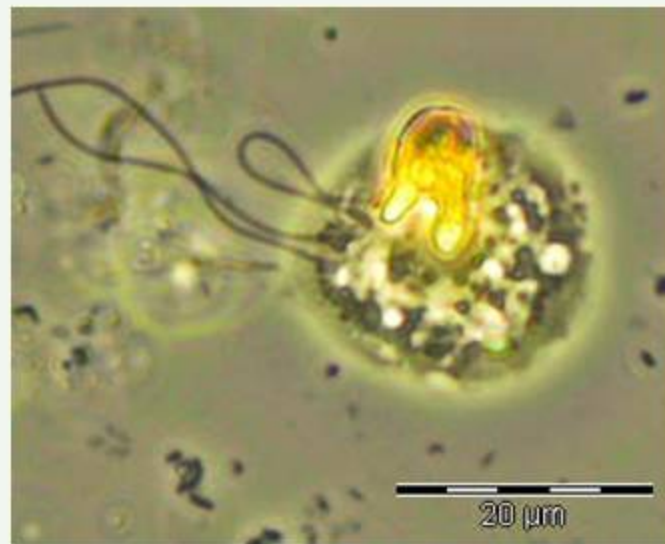


phytoplankton - prasinophyceae

Cymbomonas tetramitiformis

abundance: summer
life-form: solitary
length: 13,5 – 16 μm



LM (Bornholm Sea)

phytoplankton - prasinophyceae

Pyramimonas longicauda

abundance: autumn
life-form: solitary
diameter: 10 - 15 μm



LM (North Sea, BRIFF)